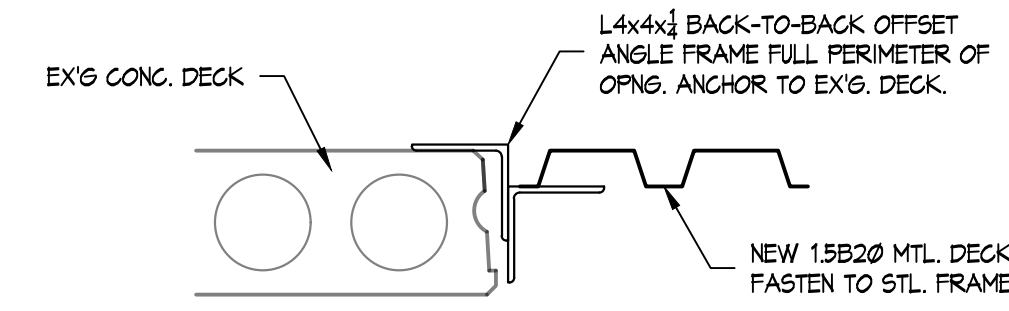


- ### KEYED ROOFING NOTES
- (R1) REMOVE EX'G. CURB. INSTALL NEW 1-5800 METAL DECK w/ DOUBLE ANGLE FRAME IN OPENING. FIELD VERIFY OPENING SIZE PRIOR TO FRAME FABRICATION. INSTALL INSULATION TO FULL THICKNESS OF EX'G. ADJACENT INSULATION. SEE DETAIL 1/42.
  - (R2) REMOVE EX'G. PARAPET COPING. EXTEND MEMBRANE UP AND OVER PARAPET WALL. OMIT NEW COPING.
  - (R3) EXTEND MEMBRANE UP AND OVER PARAPET WALL. TERMINATE UNDER NEW TWO-PIECE EDGE METAL.
  - (R4) REMOVE EX'G. CURB. INSTALL NEW ROOF DECK MATCHING EX'G. DECK PROFILE OVER OPENING, OR NEW DECK w/ DOUBLE ANGLE FRAME IN OPENING (SIMILAR TO DETAIL 1/42). INSTALL INSULATION TO FULL THICKNESS OF EX'G. ADJACENT INSULATION.
  - (R5) TERMINATE MEMBRANE UNDER EX'G. THRU WALL FLASHING USING DURO-FLASH II.
  - (R6) INSTALL MEMBRANE PAD WELDED TO ROOF MEMBRANE AT LIGHT BALLAST BLOCKS. SIZE PAD 6" LARGER THAN BALLAST BLOCKS ALL AROUND.
  - (R7) REMOVE EX'G. TERMINATION BAR AND HEAT WELD NEW MEMBRANE TO EX'G. MEMBRANE.
  - (R8) INSTALL MEMBRANE PAD WELDED TO ROOF MEMBRANE AT ROOF DRAIN DISCHARGE SPLASH BLOCK. EX'G. SPLASH BLOCK TO REMAIN.
  - (R9) INSTALL NEW ADJUSTABLE HEIGHT PIPE SUPPORTS AND CLAMPS AT MAXIMUM 8'-0" O.C. AND WITHIN 1'-0" OF CHANGES IN DIRECTION. PROVIDE MEMBRANE PAD WELDED TO MEMBRANE AT EACH SUPPORT LOCATION. SIZE PAD 4" LARGER THAN SUPPORT BASE ALL AROUND.
  - (R10) INSTALL MEMBRANE PAD WELDED TO ROOF MEMBRANE AT MEMBRANE BEARING EQUIPMENT BASES. SIZE PAD 6" LARGER THAN EQUIPMENT BASE ALL AROUND.
  - (R11) HEAT WELD TERMINATE NEW MEMBRANE TO EXISTING ADJACENT MEMBRANE ALONG EXPANSION JOINT.
  - (R12) EXTEND MEMBRANE INTO DOWNSPOUT INLET AND TERMINATE TO INSIDE OF SQUARE DOWNSPOUT WITH BOOT.
  - (R13) TERMINATE MEMBRANE TO WALL SURFACE ALONG EXPANSION JOINT WITH TERMINATION BAR.
  - (R14) REINSTALL EX'G. PIPE SUPPORTS AND CLAMPS IN SAME LOCATIONS AS REMOVED. PROVIDE MEMBRANE PAD WELDED TO MEMBRANE AT EACH SUPPORT LOCATION. SIZE PAD 4" LARGER THAN SUPPORT BASE ALL AROUND.
  - (R15) REMOVE EX'G. ABANDONED STACK PENETRATION. INSTALL NEW ROOF DECK MATCHING EX'G. DECK PROFILE OVER OPENING. INSTALL INSULATION TO FULL THICKNESS OF EX'G. ADJACENT INSULATION.
  - (R16) INSTALL MEMBRANE PAD WELDED TO ROOF MEMBRANE AT ACQU UNIT CUT WIRE BALLAST BLOCKS. SIZE PAD 6" LARGER THAN BALLAST BLOCKS ALL AROUND.
  - (R17) REMOVE EX'G. EXPANSION JOINT COVER. EXTEND MEMBRANE OVER EXPANSION JOINT USING ROOFING MANUFACTURERS STANDARD DETAILS. OMIT NEW COVER.
  - (R18) REMOVE ANGLE SUPPORTED AREA LIGHT AS REQ'D. TO INSTALL NEW EDGE METAL. REINSTALL ANGLE SUPPORTED LIGHT.
  - (R19) TERMINATE MEMBRANE UNDER EX'G. THRU WALL FLASHING AT BRICK VENEER USING DURO-FLASH II. AT AREA BETWEEN BRICK VENEER (APPROX. 40' X 2'). REMOVE EX'G. CEMENT ASBESTOS PANELS (BY OWNER). INSTALL NEW 2" DECK SHEETING AND FULLY ADHERE MEMBRANE TO WALL SURFACE. TERMINATE MEMBRANE TO BRICK WITH TERMINATION BAR. REMOVE AND REINSTALL DOWNSPOUTS AS REQ'D. TO ACCESS WALL FINISHING.
  - (R20) REMOVE EX'G. AGGREGATE WALL FINISH FROM CMU (APPROX. 3' X 74' X 8" THICK). CUT BACK EX'G. THRU WALL FLASHING FLUSH w/ SURFACE OF CMU. FULLY ADHERE NEW MEMBRANE TO WALL SURFACE. TERMINATE WALL MEMBRANE TO ADJACENT WALL SURFACES WITH TERMINATION BAR.
  - (R21) INSTALL ROOF EDGE LADDER SUPPORT. COORDINATE LOCATION w/ OWNER.

- ### EDGE METAL LEGEND
- (F1) NEW 1" TWO-PIECE SHAP-ON EDGE METAL.

SHEET INDEX	
A1	ROOF PLAN
A2	DESCRIPTION OF WORK AND CORE DATA / DETAILS

**ROOF PLAN**  
SCALE: 1" = 20'-0"



**FRAME DETAIL**

SCALE: 1/8" = 1'-0"

**DESCRIPTION OF WORK AND CORE DATA**

**GENERAL WORK NOTES:**

- APPROXIMATE HORIZONTAL PROJECTION OF ROOF AREA TO BE RE-ROOFED = 94680 s.f. AND DO NOT INCLUDE ANY SLOPE FACTOR.
- APPROXIMATE AREAS GIVEN IN WORK DESCRIPTIONS ARE HORIZONTAL PROJECTION OF ROOF, AND DO NOT INCLUDE ANY SLOPE FACTOR.
- APPROXIMATE AREAS GIVEN IN WORK DESCRIPTION DO NOT INCLUDE VERTICAL PROJECTION OF WALLS IDENTIFIED TO RECEIVE MEMBRANE ROOFING. FIELD VERIFY QUANTITY AND EXTENT OF VERTICAL PROJECTION OF WALLS TO BE COVERED IN MEMBRANE.
- WORK DESCRIPTIONS ARE INTENDED TO BE GENERAL AND IDENTIFY IN GENERAL THE SCOPE OF WORK TO BE UNDERTAKEN AT EACH ROOF AREA. ALL WORK IS TO BE INSTALLED IN ACCORDANCE WITH MANUFACTURERS INSTALLATION INSTRUCTIONS AND APPROVED DETAILS.
- MEMBRANE INSTALLED ON VERTICAL PROJECTION OF WALLS IS TO BE FULLY ADHERED TO WALL SURFACES IN ACCORDANCE WITH MANUFACTURERS INSTALLATION INSTRUCTIONS AND APPROVED DETAILS.
- CONTRACTOR IS RESPONSIBLE FOR VERIFICATION OF ALL DIMENSIONS AND CONDITIONS AS TO PROVIDE A COMPLETE AND WARRANTABLE ROOF INSTALLATION. ROOF EDGE TO ROOF EDGE.
- WHERE EXISTING CONDITIONS DIFFER FROM CONDITIONS DESCRIBED, ADVISE ARCHITECT OF CONDITIONS ENCOUNTERED AND RECOMMENDED INSTALLATION DETAIL RECOMMENDED BY ROOFING MANUFACTURER.
- REFER TO KEYED ROOFING NOTES FOR SPECIFIC EDGE FINISH AND TERMINATION NOTES, AND OTHER WORK SCOPE WARRANTING PARTICULAR ATTENTION.

**AREA 'A' - APPROX. 1370 s.f.**

- REMOVE EX'G. ROOF EDGE METAL;
- REMOVE EX'G. STONE BALLAST;
- REMOVE EX'G. DOME STRAINERS;
- REMOVE EX'G. MEMBRANE;
- REMOVE EX'G. ABANDONED ROOF CURBS AND FILL OPENINGS;
- INSTALL NEW MEMBRANE OVER EX'G. INSULATION;
- INSTALL NEW DOME STRAINERS;
- INSTALL NEW EDGE METAL.

**CORE-A1:**

- STONE BALLAST
- PVG MEMBRANE
- 1/2" POLYISO INSULATION
- BUILT-UP ROOFING
- 2" INSULATING GROUT
- CONCRETE MASONRY DECK

**AREA 'B' - APPROX. 4025 s.f.**

- REMOVE EX'G. ROOF EDGE METAL;
- REMOVE EX'G. STONE BALLAST;
- REMOVE EX'G. DOME STRAINERS;
- REMOVE EX'G. MEMBRANE;
- REMOVE EX'G. ABANDONED ROOF CURBS AND FILL OPENINGS;
- INSTALL NEW MEMBRANE OVER EX'G. INSULATION;
- INSTALL NEW DOME STRAINERS;
- INSTALL NEW EDGE METAL.

**CORE-B1:**

- STONE BALLAST
- PVG MEMBRANE
- 1/2" POLYISO INSULATION
- BUILT-UP ROOFING
- 2" INSULATING GROUT
- CONCRETE MASONRY DECK

**AREA 'C' - APPROX. 10,021 s.f.**

- REMOVE EX'G. ROOF EDGE METAL;
- REMOVE EX'G. STONE BALLAST;
- REMOVE EX'G. DOME STRAINERS;
- REMOVE EX'G. MEMBRANE;
- REMOVE EX'G. ABANDONED ROOF CURBS AND FILL OPENINGS;
- INSTALL NEW MEMBRANE OVER EX'G. INSULATION;
- INSTALL NEW DOME STRAINERS;
- INSTALL NEW EDGE METAL.

**CORE-C1:**

- STONE BALLAST
- PVG MEMBRANE
- 1/2" POLYISO INSULATION
- BUILT-UP ROOFING
- 1/2" POLYISO INSULATION
- METAL DECK

**AREA 'D' - APPROX. 2,856 s.f.**

- REMOVE EX'G. ROOF EDGE METAL;
- REMOVE EX'G. STONE BALLAST;
- REMOVE EX'G. DOME STRAINERS;
- REMOVE EX'G. MEMBRANE;
- REMOVE EX'G. ABANDONED ROOF CURBS AND FILL OPENINGS;
- INSTALL NEW MEMBRANE OVER EX'G. INSULATION;
- INSTALL NEW DOME STRAINERS;
- INSTALL NEW EDGE METAL.

**CORE-D1:**

- STONE BALLAST
- PVG MEMBRANE
- 1/2" POLYISO INSULATION
- BUILT-UP ROOFING
- 1/2" POLYISO INSULATION
- METAL DECK

**AREA 'E' - APPROX. 6,191 s.f.**

- REMOVE EX'G. ROOF EDGE METAL;
- REMOVE EX'G. STONE BALLAST;
- REMOVE EX'G. DOME STRAINERS;
- REMOVE EX'G. MEMBRANE;
- REMOVE EX'G. ABANDONED ROOF CURBS AND FILL OPENINGS;
- INSTALL NEW MEMBRANE OVER EX'G. INSULATION;
- INSTALL NEW DOME STRAINERS;
- INSTALL NEW EDGE METAL.

**CORE-E1:**

- STONE BALLAST
- PVG MEMBRANE
- 1/2" POLYISO INSULATION
- BUILT-UP ROOFING
- 1/2" POLYISO INSULATION
- METAL DECK

**AREA 'F' - APPROX. 5,481 s.f.**

- REMOVE EX'G. ROOF EDGE METAL;
- REMOVE EX'G. STONE BALLAST;
- REMOVE EX'G. DOME STRAINERS;
- REMOVE EX'G. MEMBRANE;
- REMOVE EX'G. ABANDONED ROOF CURBS AND FILL OPENINGS;
- INSTALL NEW MEMBRANE OVER EX'G. INSULATION;
- INSTALL NEW DOME STRAINERS;
- INSTALL NEW EDGE METAL.

**CORE-F1:**

- STONE BALLAST
- PVG MEMBRANE
- 1/2" POLYISO INSULATION
- BUILT-UP ROOFING
- 1/2" POLYISO INSULATION
- METAL DECK

**AREA 'G' - APPROX. 2,856 s.f.**

- REMOVE EX'G. ROOF EDGE METAL;
- REMOVE EX'G. STONE BALLAST;
- REMOVE EX'G. DOME STRAINERS;
- REMOVE EX'G. MEMBRANE;
- REMOVE EX'G. ABANDONED ROOF CURBS AND FILL OPENINGS;
- INSTALL NEW MEMBRANE OVER EX'G. INSULATION;
- INSTALL NEW DOME STRAINERS;
- INSTALL NEW EDGE METAL.

**CORE-G1:**

- STONE BALLAST
- PVG MEMBRANE
- 1/2" POLYISO INSULATION
- BUILT-UP ROOFING
- 1/2" POLYISO INSULATION
- METAL DECK

**AREA 'H' - APPROX. 5,146 s.f.**

- REMOVE EX'G. ROOF EDGE METAL;
- REMOVE EX'G. STONE BALLAST;
- REMOVE EX'G. DOME STRAINERS;
- REMOVE EX'G. MEMBRANE;
- REMOVE EX'G. ABANDONED ROOF CURBS AND FILL OPENINGS;
- INSTALL NEW MEMBRANE OVER EX'G. INSULATION;
- INSTALL NEW DOME STRAINERS;
- INSTALL NEW EDGE METAL.

**CORE-H1:**

- STONE BALLAST
- PVG MEMBRANE
- 1/2" POLYISO INSULATION
- BUILT-UP ROOFING
- 1/2" POLYISO INSULATION
- METAL DECK

**AREA 'I' - APPROX. 1,813 s.f.**

- REMOVE EX'G. ROOF EDGE METAL;
- REMOVE EX'G. STONE BALLAST;
- REMOVE EX'G. DOME STRAINERS;
- REMOVE EX'G. MEMBRANE;
- REMOVE EX'G. ABANDONED ROOF CURBS AND FILL OPENINGS;
- INSTALL NEW MEMBRANE OVER EX'G. INSULATION;
- INSTALL NEW DOME STRAINERS;
- INSTALL NEW EDGE METAL.

**CORE-I1:**

- STONE BALLAST
- PVG MEMBRANE
- 1/2" POLYISO INSULATION
- BUILT-UP ROOFING
- 1/2" POLYISO INSULATION
- METAL DECK

**AREA 'J' - APPROX. 5,414 s.f.**

- REMOVE EX'G. ROOF EDGE METAL;
- REMOVE EX'G. STONE BALLAST;
- REMOVE EX'G. DOME STRAINERS;
- REMOVE EX'G. MEMBRANE;
- REMOVE EX'G. ABANDONED ROOF CURBS AND FILL OPENINGS;
- INSTALL NEW MEMBRANE OVER EX'G. INSULATION;
- INSTALL NEW DOME STRAINERS;
- INSTALL NEW EDGE METAL.

**CORE-J1:**

- PVG MEMBRANE
- 3" POLYISO INSULATION (2 LAYERS OF 1/2")
- METAL DECK

**AREA 'K' - APPROX. 3,944 s.f.**

- REMOVE EX'G. ROOF EDGE METAL;
- REMOVE EX'G. STONE BALLAST;
- REMOVE EX'G. DOME STRAINERS;
- REMOVE EX'G. MEMBRANE;
- REMOVE EX'G. ABANDONED ROOF CURBS AND FILL OPENINGS;
- INSTALL NEW MEMBRANE OVER EX'G. INSULATION;
- INSTALL NEW DOME STRAINERS;
- INSTALL NEW EDGE METAL.

**CORE-K1:**

- STONE BALLAST
- PVG MEMBRANE
- 1/2" POLYISO INSULATION
- BUILT-UP ROOFING
- 1/2" POLYISO INSULATION
- METAL DECK

**AREA 'L' - APPROX. 1,813 s.f.**

- REMOVE EX'G. ROOF EDGE METAL;
- REMOVE EX'G. STONE BALLAST;
- REMOVE EX'G. DOME STRAINERS;
- REMOVE EX'G. MEMBRANE;
- REMOVE EX'G. ABANDONED ROOF CURBS AND FILL OPENINGS;
- INSTALL NEW MEMBRANE OVER EX'G. INSULATION;
- INSTALL NEW DOME STRAINERS;
- INSTALL NEW EDGE METAL.

**CORE-L1:**

- STONE BALLAST
- PVG MEMBRANE
- 1/2" POLYISO INSULATION
- BUILT-UP ROOFING
- 1/2" POLYISO INSULATION
- METAL DECK

**AREA 'M' - APPROX. 8,281 s.f.**

- REMOVE EX'G. ROOF EDGE METAL;
- REMOVE EX'G. STONE BALLAST;
- REMOVE EX'G. DOME STRAINERS;
- REMOVE EX'G. MEMBRANE;
- REMOVE EX'G. ABANDONED ROOF CURBS AND FILL OPENINGS;
- INSTALL NEW MEMBRANE OVER EX'G. INSULATION;
- INSTALL NEW DOME STRAINERS;
- INSTALL NEW EDGE METAL.

**CORE-M1:**

- STONE BALLAST
- PVG MEMBRANE
- 1/2" POLYISO INSULATION
- BUILT-UP ROOFING
- 1/2" POLYISO INSULATION
- METAL DECK

**ANTHONY P. ESSON ARCHITECT**  
 GAYLORD, MICHIGAN  
 PO BOX 479  
 TELEPHONE: (989) 732-0585

DRAWING TITLE  
**DESCRIPTION OF WORK AND CORE DATA**  
 DETAILS

PROJECT TITLE  
**OGEMAW HEIGHTS HIGH SCHOOL PARTIAL REROOFING**  
 WEST BRANCH OSE CITY AREA SCHOOLS  
 OGEMAW HEIGHTS HIGH SCHOOL  
 WEST BRANCH, MICHIGAN

PROJECT NO.  
**263-18N**

DATE  
 APRIL 15

SHEET  
**A2**